



MAKE A DIFFERENCE!

If you want a career where you can make a difference in people's lives, consider working in law enforcement for a city or county. There are many jobs to choose from, such as police officer, deputy sheriff, dispatch supervisor, probation officer, crime analyst and investigator.

JOB DUTIES

Police officers and deputy sheriffs protect lives and property. Detectives and criminal investigators gather facts and collect evidence of possible crimes. Probation officers work with offenders who've been released from jail to make sure they follow the terms of their parole.

WHAT IT TAKES

The minimum age to work as a police officer or deputy sheriff is 21 years of age. Candidates must:

- Be a U.S. citizen.
- Have no felony convictions or misdemeanor convictions involving domestic abuse or a sexual component.
- Pass a written examination, a physical abilities assessment and a polygraph test.
- Undergo a psychological and medical evaluation.

HIRING OUTLOOK

There are approximately 7,526 law enforcement jobs¹ in the Kansas City region. High demand for public safety will lead to 485 new openings by 2024. As of 2015, 22.4 percent of the law enforcement workforce were women and 15.1 percent were people of color.



SALARY

By working in law enforcement, you can earn a regular salary, medical coverage and a retirement pension.

CAREER	SALARY RANGE
Police Officer/Deputy Sheriff	\$36,377 to \$58,757
Master Officer	\$48,665 to \$72,044
Detective	\$43,379 to \$80,517
Sergeant	\$51,957 to \$86,641
Lieutenant	\$58,062 to \$94,098
Captain	\$66,991 to \$101,814
Major/Assistant Police Chief/Undersheriff	\$76,901 to \$105,018
Chief of Police/Sheriff	\$105,588 to \$177,984

Source: Mid-America Regional Council 2016 Local Government Salary Survey

MORE INFO?

Learn more about law enforcement careers at **CareerExpo2017.org**.



Find your path in ...

LAW ENFORCEMENT

CAREER LADDER

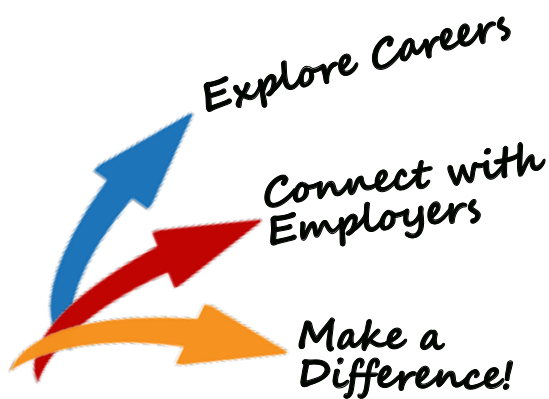
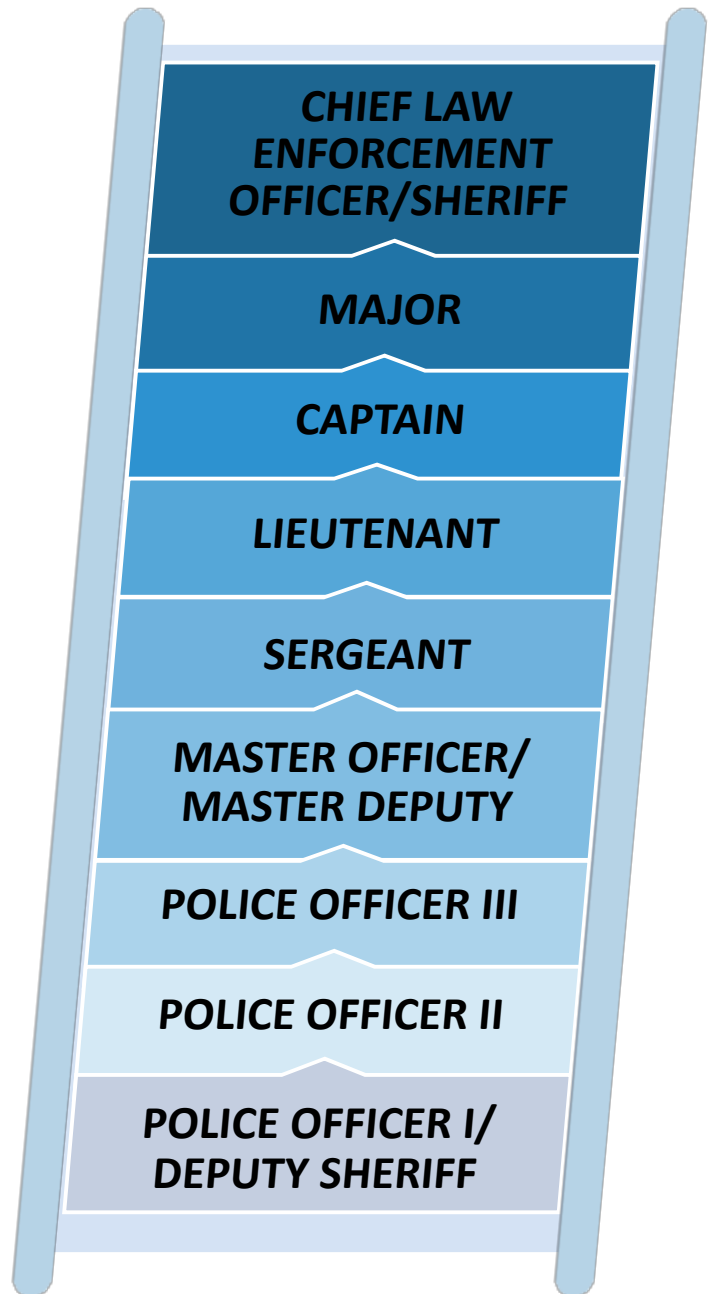
Law enforcement offers a variety of entry-level positions and opportunities for advancement as an employee continues his or her education and gains work experience. Cities and counties often prefer to recruit local talent and promote from within.

Many types of specialized career fields are available, such as police officer, deputy sheriff, probation officer, forensics scientist and investigator. The career ladder to the right shows the pathway starting as police officer or deputy sheriff moving up to chief law enforcement officer or sheriff.



10 TOP SKILLS

- Active Listening
- Speaking
- Critical Thinking
- Reading Comprehension
- Monitoring
- Writing
- Active Learning
- Learning Strategies
- Mathematics
- Science



EDUCATION

Getting a high school diploma or GED is the minimum education requirement for most careers in law enforcement. However, many organizations prefer to hire individuals with a bachelor's degree for more advanced positions.